

# **NORTHAMPTON TOWN FOOTBALL CLUB**



**PROGRAMME**

**SIXPENCE**

**CHAMPIONS DIVISION III 1962-63**



---

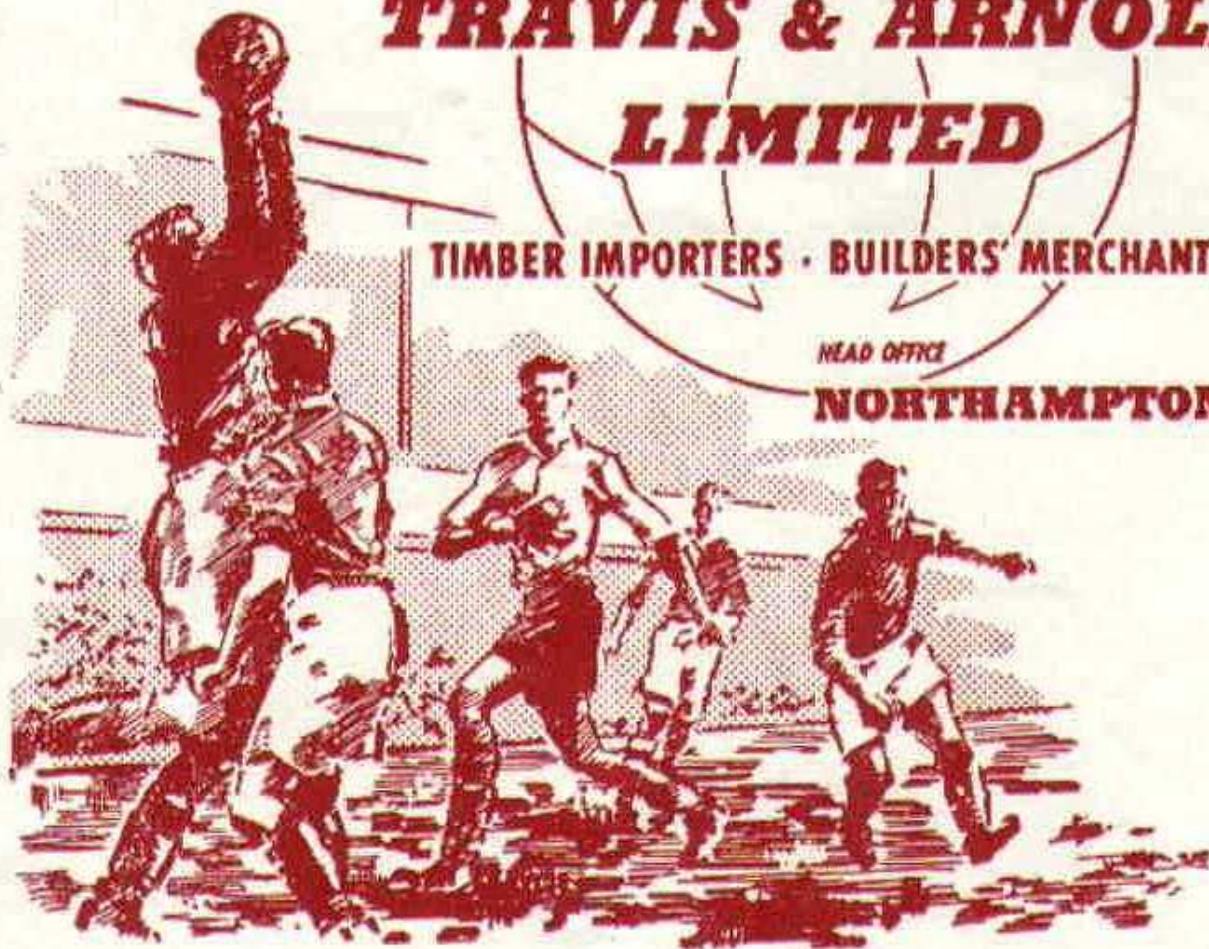
*Always on top of their form!*

**TRAVIS & ARNOLD  
LIMITED**

**TIMBER IMPORTERS · BUILDERS' MERCHANTS**

HEAD OFFICE

**NORTHAMPTON**



Telephone :  
52333 (10 lines).

Branches throughout  
the country.

---



# **Northampton Town Football Club Limited**

**Registered Office : County Ground, Northampton. Tel. 31553**

**President : C. T. Cripps, M.B.E.**

**Directors :** Messrs. F. J. York (Chairman),  
C. E. Buller (Vice-Chairman), R. Brett, Dr. G. Hollingsworth,  
E. P. Northover, W. R. Penn (Life Vice-President),  
R. L. M. Saunders, A. Whatton and C. T. Wilson, O.B.E.

**Hon. Medical Officer :** Dr. James Orr.

**Hon. Dental Surgeon :** D. H. Wilson.

**Secretary :** W. R. Osborne.

**Manager :** D. Bowen.

---

## **COBBLERS v. SWINDON TOWN**

**Football League, Division II.**

**SATURDAY, SEPTEMBER 28th, 1963. Kick-off 3 p.m.**

---

### *Club Notes*

A bumper crowd is expected today for one of our most intriguing games yet played in the Second Division. It is against Swindon, who accompanied the Cobblers in promotion last season. We have, of course, played many games against Swindon in the Third Division over the past years. But few were so rich in promise as the encounter today. For Swindon are still unbeaten, and lead the Second Division table by three points.

Not only that, but last Saturday they equalled a record, established by Portsmouth in 1924-5. The record is being unbeaten in the first nine games after promotion to Division Two.



# HOME OR AWAY

**you're on a  
winner with —**

**ALL THE SPORTS  
NEWS AND RESULTS  
EVERY SATURDAY**

**THE  
GREEN 'UN**

**SPORTS EDITION OF THE  
CHRONICLE & ECHO.**



**CHARTERED AUCTIONEERS AND ESTATE AGENTS  
SURVEYORS, VALUERS AND PROPERTY MANAGERS**

**4 & 5 GEORGE ROW, NORTHAMPTON**

Telephone : Northampton 37282 (4 lines).

**And at NORTHAMPTON AUCTION GALLERIES,  
33/35 SHEEP STREET**

Telephone : Northampton 37263 (2 lines).

**EVERY HOME NEEDS A**

## **PORTABLE TYPEWRITER**

Prices from only **£16 GNS. CASH**, or  
**£1 13s. 6d.** deposit and **£1 8s. 0d.** per month

**ALL MODELS FULLY GUARANTEED 1 year.**

**ALL MAKES SUPPLIED.**

## **WHITE'S OFFICE EQUIPMENT**

**11 & 19 MAREFAIR,**

**Tel.**

**NORTHAMPTON.**

**35496**





But Swindon's points total is best. They have won seven and drawn two, whereas Portsmouth won four and drew five. They did also win their first six games after promotion, which is another record. So we can expect a rare tussle today, with Swindon strongly backed by supporters, like the clubs put up when making a 1—1 draw at the County Ground last March.

In our last home game the Cobblers made a great fight-back to beat Norwich City. Our boys did not open so strongly as they had done at Norwich the previous week, and were soon a goal down. This became two after 31 minutes. Then the revival started with a goal by Frank Large six minutes later. Afterwards the Cobblers gained a grip. Young Billy Best, who made an excellent debut, equalised, and finally with 12 minutes to go, Frank Large scored again.

The game against Manchester City last Saturday was not so pleasing. It was a day when things went wrong, even before we reached Manchester. Heavy traffic caused a hold-up so that the team did not reach Maine Road until eight minutes before the game, with the players having to change in the coach. While they were still settling down, Manchester ran in three goals in the first 23 minutes. When the first goal was scored Terry Branston was injured, and he hobbled the rest of the match. But our boys prevented further goals, although they could not score themselves in some second-half attacking.

There was no league match in mid-week because of the second round ties of the Football League Cup. We were at Brighton and made a 1—1 draw. Roly Mills put the Cobblers ahead after 25 minutes with a real cracker of a shot from 30 yards. We held this lead until Baxter headed an equaliser after 72 minutes. Brighton were reputed by their fans to give their best performance of the season. Now the winners of the replay have to visit Colchester. By a coincidence we played Colchester at home in the second round last season, winning by 2—0.



*Visit the*

**Sports Specialists—**

THE CLUB SUPPLIERS

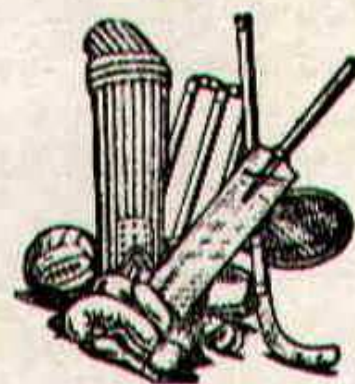
**BOWEN & COLLINS**

(Sports) LTD.

**11 GOLD STREET, NORTHAMPTON**

(Adjoining Grand Hotel).

Tel. 36857



---

**WEEK-END TICKETS FROM NORTHAMPTON  
CASTLE for**

**ILLUMINATIONS**

**BLACKPOOL 46/-.**

**MORECAMBE 48/6**

Outward Friday, Saturday or Sunday.

Return Saturday, Sunday or Monday.

Full details from Stations and Official Railway Agents.

**BRITISH RAILWAYS**

**LONDON MIDLAND REGION**

---



## PEN PICTURES OF OUR VISITORS

**MIKE TURNER** (goalkeeper).—Just demobbed from the R.A.F. he joined the Club whilst still in the Services. Secured his first team position this season.

**OWEN DAWSON** (right-back).—Signed during the close season from Portsmouth. Former Youth International Made the first-team position his own this season.

**JOHN TROLLOPE** (left-back).—Local boy joined Swindon from school. Was selected for first team beginning of season 1960-61 when he was 16. Maximum appearances last season.

**KEITH MORGAN** (right-half).—Captain. Joined Swindon as a youth player from Westbury. Made maximum appearances last season.

**KEN McPHERSON** (centre-half).—Signed from Newport County in August, 1961. Originally a centre-forward, he has proved he has ability to take over in defence.

**BOB WOODRUFF**.—A local player from Swindon Schoolboys' team. Has played at centre-forward and inside-forward in the first team.

**MIKE SUMMERBEE** (outside-right).—A product of the Swindon Youth policy. Formerly played at centre-forward, but has now made the outside-right berth his own.

**ERNIE HUNT** (inside-right).—Joined the ground staff from school. Played in the first team at 16 years old. A player of outstanding ability.

**JACK SMITH** (centre-forward).—Signed by Swindon from Watford during 1960/1 season. A strong, forceful player with the ability to get the unexpected goal.

**ROGER SMART** (inside-left).—A local boy who joined the club direct from Swindon Schoolboys' team. Made four first-team appearances last season.

**ARNOLD D'ARCY** (outside-left).—Joined Swindon Town from Wigan Athletic. In spite of his lack of inches is a strong forceful winger with a powerful shot.



*MAYFAIR HAIRSTYLING at its best!*

**Katie Gale**

*Haute  
Coiffure*

21c ABINGTON GROVE,  
NORTHAMPTON.

Tel. 33945

---

ALWAYS VISIT

**MANNING'S (Newsagents)**

210 ABINGTON AVENUE LTD.

when Coming to the County Ground.  
FOR QUICK SERVICE.

SWEETS

CHOCOLATES

CIGARETTES

---

**FRAMES' FOR TRAVEL**

RAIL TICKETS FOR ANY JOURNEY.

AIR BOOKING.

OCEAN PASSAGES.

Hotel Accommodation.

London Theatre Seats.

Let us arrange your next Party Outing. Booking Agents for United  
Counties' Excursions. Tours and Express Coach Services.

**FRAMES' TOURS Ltd.**

21 GOLD STREET and 8a GEORGE ROW,

(Tel. 37101)

NORTHAMPTON

(Tel. 37746)

Offices also at : Wellingborough, Kettering, Corby,  
Peterborough, Bedford, Bletchley, etc.



## FOOTBALL LEAGUE — DIVISION II.

			P	W	D	L	F	A	P
Swindon Town	...	...	9	7	2	0	18	4	16
Sunderland	...	...	9	6	1	2	14	6	13
Middlesbrough	...	...	9	5	2	2	25	10	12
Preston North End	...	...	9	4	4	1	21	17	12
Bury	...	...	9	5	1	3	18	14	11
Leeds United	...	...	8	3	4	1	12	7	10
Leyton Orient	...	...	9	4	2	3	11	9	10
Manchester City	...	...	9	4	2	3	14	12	10
Derby County	...	...	9	4	2	3	10	9	10
Southampton	...	...	9	3	3	3	21	16	9
Newcastle United	...	...	9	4	1	4	19	17	9
<b>Northampton Town</b>	...	...	<b>8</b>	<b>4</b>	<b>1</b>	<b>3</b>	<b>13</b>	<b>12</b>	<b>9</b>
Huddersfield Town	...	...	9	4	1	4	15	16	9
Charlton Athletic	...	...	9	4	1	4	17	22	9
Cardiff City	...	...	9	3	2	4	11	16	8
Rotherham United	...	...	9	2	3	4	13	17	7
Portsmouth	...	...	9	2	3	4	11	18	7
Swansea Town	...	...	9	2	3	4	10	17	7
Grimsby Town	...	...	9	2	2	5	10	19	6
Norwich City	...	...	9	1	3	5	14	20	5
Plymouth Argyle	...	...	9	0	4	5	10	20	4
Scunthorpe United	...	...	9	0	3	6	7	16	3

---

Next Home Match :—

### COBBLERS v. LEEDS UNITED

Football League, Division II.

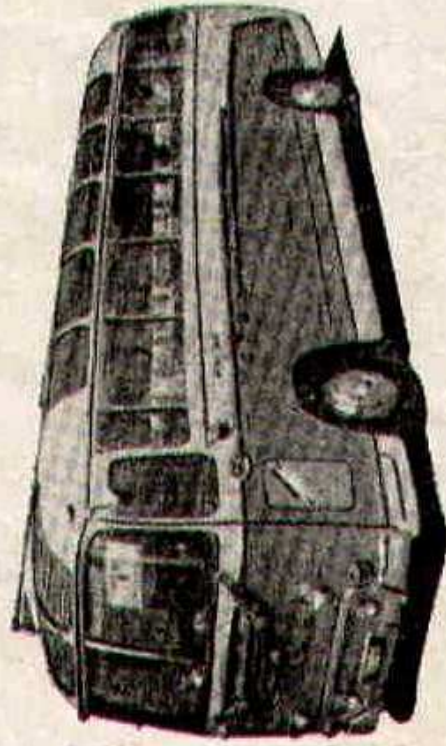
TUESDAY, OCTOBER 1st, 1963.

Kick-off 7.30 p.m.



# YORK BROS. (Northampton) LTD.

Coaches for—\* Theatre Parties  
 \* Works Outings  
 \* Evening Trips  
 \* Sports Fixtures  
 \* and all occasions.



We are pleased to arrange all  
 Catering, Tickets, etc.

**“WANT A COACH? —**

**GO TO YORKS!”**

**Tel. 33155**

## NORTHAMPTON TOWN

**BRODIE**

<sup>2</sup>  
**COCKCROFT**

<sup>3</sup>  
**EVERITT**

<sup>4</sup>  
**LECK**

<sup>5</sup>  
**BRANSTON**

<sup>6</sup>  
**MILLS**

<sup>7</sup>  
**HAILS**

<sup>8</sup>  
**LLEWELLYN**

<sup>9</sup>  
**LARGE**

<sup>10</sup>  
**REID**

<sup>11</sup>  
**LINES**

Referee : **R. V. SPITTLE**  
 (Great Yarmouth).



Linesmen : **D. A. MOORE** (Coventry).  
 (Red Flag)  
**A. WALTON** (Warwick).  
 (Yellow Flag)



Referee : **R. V. SPITTLE**

(Great Yarmouth).



Linesmen : **D. A. MOORE** (Coventry).  
(Red Flag)

**A. WALTON** (Warwick).  
(Yellow Flag)

**ROGERS**

11

**SMART**

10

**SMITH**

9

**HUNT**

8

**SUMMERBEE**

7

**WOODRUFF**

6

**McPHERSON**

5

**MORGAN**

4

**TROLLOPE**

3

**DAWSON**

2

**TURNER**

**SWINDON TOWN**

**WILSON**

**BUILT!  
WELL BUILT**

**"REMEMBER —IT'S  
CHEAPER TO BUY."**

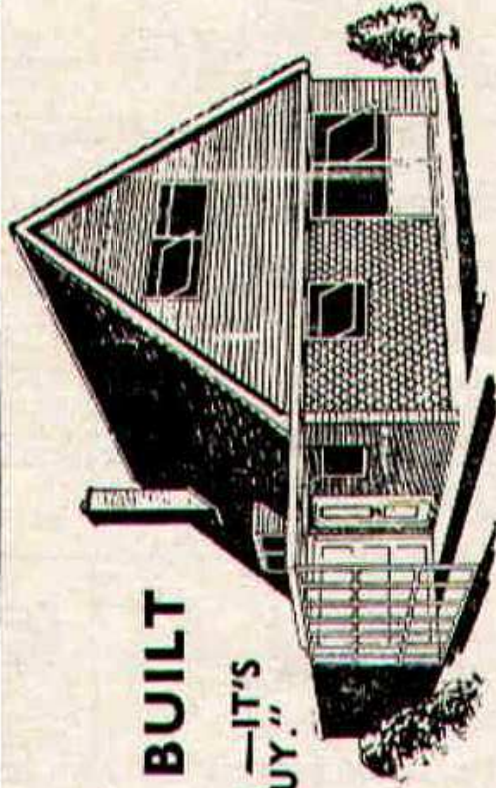
**For Better Investment Value . . . Better Living  
Features and Better Design, always choose a  
WILSON Home.**

Northampton, Wellingborough, Brixworth, Ketter-  
ing, Barton Seagrave, Corby, Wootton, Chapel  
Brampton, Newport Pagnell, Rugby, Peterborough.

**Call or Write for Full Details :—**

**WILSON'S (Builders N'pton) LTD. 63 SHEEP STREET, NORTHAMPTON**

**AND VISIT OUR "HOMES EXHIBITION CENTRE" IN DERNGATE.**



**Tel. No. 35271 (5 lines).**



# **WHATTON'S FOR WOOD**

**ALWAYS A HOME WINNER !**

**AFTER THE MATCH GO HOME TO A GOOD FIRE  
WITH OUR LOGS.**

This is today's Best Fuel Value.

Immediate delivery at 2/6 per bag. No orders taken under 4 bags.

**E. WHATTON & SONS, LTD., HARTWELL, NORTHAMPTON**

**Timber Merchants.**

**Tel. ROADE 233.**

---

## **YOU CAN MAKE MOVIES— —WITH SNAPSHOT EASE !**

Capture your happy moments in large-as-life action . . . .  
Wonderful colour ! With a "Brownie" Movie Camera  
it's as easy as taking snapshots—and surprisingly economical.  
May we tell you more about this exciting new hobby?

**New "BROWNIE"**

**8 Movie Camera**

**only £12 7s. 0d.**

**SEE IT AT—**

**E. P. NORTHOVER**

**CHEMIST  
& OPTICIAN**

**NORTHAMPTON**

---



## SECOND DIVISION

Aug.	27	Scunthorpe	(8,496)	2	1
	31	Sunderland	(39,201)	2	0
Sept.	3	Scunthorpe	(16,032)	2	0
	7	Derby City.	(14,672)	0	1
	11	Norwich City	(20,403)	3	3
	13	Bury	(14,886)	1	2
	16	Norwich City	(14,928)	3	2
	21	Manch'ter C	(21,340)	0	3
	25	Brighton	(F.L. Cup)	1	1
	28	Swindon Town	...	...	H
Oct.	1	Leeds United	...	...	H
	5	Cardiff City	...	...	A
	8	Huddersfield Town	...	...	H
	12	Plymouth Argyle	...	...	A
	19	Charlton Athletic	...	...	H
	26	Newcastle United	...	...	A
Nov.	2	Preston North End	...	...	H
	9	Leyton Orient	...	...	A
	16	Swansea Town	...	...	H
	23	Southampton	...	...	A
	30	Middlesbrough	...	...	H
Dec.	7	Grimsby Town	...	...	A
	14	Leeds United	...	...	A
	21	Sunderland	...	...	H
	26	Rotherham United	...	...	H
	28	Rotherham United	...	...	A
Jan.	4	F.A. Cup—3rd Round.	...	...	
	11	Derby County	...	...	A
	18	Bury	...	...	A
	25	F.A. Cup—4th Round.	...	...	
Feb.	1	Manchester City	...	...	H
	8	Swindon Town	...	...	A
	15	Cardiff City	...	...	H
		F.A. Cup—5th Round.	...	...	
	18	Plymouth Argyle	...	...	H
	29	Swansea Town	...	...	A
		F.A. Cup—6th Round.	...	...	
Mar.	7	Newcastle United	...	...	H
	14	Huddersfield Town	...	...	A
		F.A. Cup—Semi-final.	...	...	
	21	Leyton Orient	...	...	H
	28	Charlton Athletic	...	...	A
	30	Portsmouth	...	...	A
	31	Portsmouth	...	...	H

Apr.	4	Southampton	...	...	H
	10	Middlesbrough	...	...	A
	18	Grimsby Town	...	...	H
	25	Preston North End	...	...	A
May	2	F.A. Cup—Final.	...	...	

## FOOTBALL COMBINATION

Aug.	24	Leicester City	...	2	3
	31	Peterborough United	...	0	2
Sept.	7		...	...	
	10	Bristol Rovers	...	2	0
	14	Colchester United	...	4	2
	21	Cardiff City (1,932)	...	2	3
	28	West Ham United	...	...	A
Oct.	5	Norwich City	...	...	H
	12	Arsenal	...	...	H
	19	Shrewsbury Town	...	...	A
	26	Mansfield Town	...	...	H
Nov.	2	Luton Town	...	...	A
	9	Crystal Palace	...	...	H
	16	Ipswich Town	...	...	A
	23	Notts County	...	...	H
	30	Plymouth Argyle	...	...	A
Dec.	7	Shrewsbury Town	...	...	H
	14	Leicester City	...	...	H
	21		...	...	
	28	Bristol Rovers	...	...	H

1964					
Jan.	4	Peterborough United	...	...	H
	11	Nottingham Forest	...	...	A
	18	Colchester United	...	...	H
	25	Nottingham Forest	...	...	H
Feb.	1	Cardiff City	...	...	A
	8	West Ham United	...	...	H
	15	Norwich City	...	...	A
	22	Mansfield Town	...	...	A
	29	Luton Town	...	...	H
Mar.	7	Crystal Palace	...	...	A
	14	Ipswich Town	...	...	H
	21	Notts County	...	...	A
	28	Plymouth Argyle	...	...	H
Apr.	4	Arsenal	...	...	A
	11	Tottenham Hotspur	...	...	H
	25	Tottenham Hotspur	...	...	A

Copyright The Football League, 1963



**YOUR**

*Best Chance  
for a  
Big Prize!*

**THE DAILY DIP  
AND  
Cobblers' BOBBERS**

---

*£700 each week!*

Agents required, particularly in the Country Districts.  
Apply : Competition Office, County Ground.  
Phone 34918.



## OUR RESERVES

After playing four away games to start the season, our Reserves made their home debut last Saturday, when they lost narrowly by 3—2 to Cardiff City Reserves. Of the four away games they lost the first two, at Leicester and Peterborough, and then won the next two against Bristol Rovers and Colchester.

The game at Colchester brought a 4—2 success that was specially pleasing. For our team was two down at the interval, and then fought back strongly to gain complete control. We put in much pressure early on, but near the interval Colchester shook the Cobblers by scoring twice in four minutes. Don Martin went on to get a hat-trick as the pressure increased after half-time. Bert Llewellyn scored the other, and we went near to several more goals.

Against a Cardiff side that included some well-known players last Saturday, we were down to an early goal. Then we scored twice, but Cardiff equalised near the interval. Finally they went ahead in the closing stages.

This was a game that tailed off after a lively opening half. It was disappointing, for our boys looked capable of winning.

## HALF-TIME SCOREBOARD

<b>A</b> —Bury v. Manchester City ...	...	.....
<b>B</b> —Charlton Athletic v. Plymouth Argyle	...	.....
<b>C</b> —Grimsby Town v. Derby County ...	...	.....
<b>D</b> —Leeds United v. Norwich City ...	...	.....
<b>E</b> —Leyton Orient v. Newcastle United	...	.....
<b>F</b> —Portsmouth v. Southampton ...	...	.....
<b>G</b> —Preston North End v. Huddersfield Town	...	.....
<b>H</b> —Rotherham United v. Scunthorpe United	...	.....
<b>I</b> —Sunderland v. Cardiff City ...	...	.....
<b>J</b> —Swansea Town v. Middlesbrough ...	...	.....



---

# ALWAYS A WINNER—

A SAVINGS ACCOUNT WITH

**Northampton & Midlands**  
**BUILDING SOCIETY**  
TEL. No. 37422

---

Branches :  
Bletchley, Corby and  
20 Kingsley Park Terrace.

---

60 GOLD STREET,  
NORTHAMPTON.

---

**THE CLUB ARE CONCERNED** with regard to the behaviour of some spectators at home matches, and ask all spectators to refrain from any such behaviour against players or officials in future, and to avoid coming on to the playing area during or after matches. If such behaviour occurs as did in the match against Norwich City it might well mean that disciplinary action would be taken by The Football Association. It would be a very serious matter if incidents led to warning notices having to be posted, or even the ground being closed. The Club ask spectators, therefore, to refrain from any incidents likely to cause trouble with the authorities.

---



# Supporters' Club Notes

The new style fund raising tickets are going wonderfully well at the moment, but to reach our target of 15,000 each week we would welcome many more agents to help us to achieve our aim. As the sales increase the prizes will also go up in value, so anyone who would be willing to help us please call at the Supporters' Club Office at 195 Abington Avenue, when we shall be pleased to give all the information required.

**Notice to all our Old Age Pensioner supporters.**—The next and final date for obtaining these concessions will be on Saturday, October 5th, from approximately 4.40 until 5.15 p.m.

---

## *Claret & White Development Scheme*

The Ground Improvement schemes now taking place at the County Ground are for you, our loyal band of supporters. The re-roofing of the Stand and the extensions to the Spion Kop end of the ground are costing quite a lot of money, and we have pledged ourselves to defray the cost of these improvements, and we are quite certain that with the continued wonderful support which you have given us over the years with the erecting of the floodlights, etc., that we shall be able to complete our obligations by the end of the present season.

The amount in hand at the moment is £8,032, and we require £11,105 to fulfill our obligations. Thank you !



# A CERTAIN "DRAW"



## PHIPPS AND WATNEY MANN BEERS

ON SALE AT THE  
LICENSED BARS.



### APPEARANCES

Brodie	...	8	Leck	...	8
Foley	...	2	Hails	...	6
Cockcroft		6	Best	...	2
Everitt	...	8	Smith	...	8
Kiernan	...	6	Large	...	8
Mills	...	2	Reid	...	8
Branston	...	8	Lines	...	8

### SCORERS

Large	...	5	Best	...	1
Smith	...	3	Leck	...	1
Hails	...	2	Lines	...	1

### FOOTBALL COMBINATION SCORERS

Martin	...	...	...	5	Kane	...	...	...	1
Llewellyn	...	...	...	2	Opponent	...	...	...	1
Hall	...	...	...	1					

Published by Northampton Town Football Club, and printed by  
Archer & Goodman, Wellington Street, Northampton.



WHERE YOU SCORE POINTS GALORE!

# *Airflow Streamlines*

*Retail*



*Dealers*

**LTD.**

**FULL RANGE ALWAYS AVAILABLE—**

**FINE SELECTION OF USED CARS**

**Demonstrations with pleasure**

**George Row & St. Giles' St., Northampton**

**Phone 36211**

**REPAIR SERVICE & CRASH DIVISION—**

**Large Forecourt Petrol Station, Hopping Hill**

**Phone Duston 671**

**NEW DUSTON**

**Northampton's Comprehensive Motor Company**

---

**ARCHER & GOODMAN**

*PRINTING AND STATIONERY*

*— FOR EVERY PURPOSE —*

**36-42 Wellington St., Northampton**

**Phone 37959**



# GROCERIES & PROVISIONS

**QUALITY CIVIL'S SATISFACTION**

19/22 Harborough Road, 76 St. Leonard's Road,  
1 Balmoral Road, 8 Kingsthorpe Hollow, 53/54 Barrack Road,  
237/9 Birchfield Road E., 132 Wellingborough Road, 2a London Road,  
192 Kettering Rd., 340 Wellingborough Rd., 64/66 Kingsley Pk. Ter.

---

**S A X B Y**

**SHOPPERS WIN THE  
BIGGEST DIVIDENDS**

Specialists in PORK PIES, SAUSAGES, COOKED MEATS  
and PROVISIONS, and of course DAIRY FED PORK.

**11 ABINGTON STREET**

London, St. Albans, Luton, Bedford and Wellingborough.

---

**BAMENT**

**of Abington Avenue**

**FOR NEW AND USED CAR SALES AND SERVICE**